

**1. Answer the following questions.**

- i. Write a command to change the size of the canvas to 200 steps height and 200 steps width.**

Ans. canvas size 200,200

- ii. Write a command to change the thickness of the turtle's pen to width units.**

Ans. pen width 40

- iii. Are the commands turnright 360 and turnleft 360 the same? What do they do?**

Ans. Yes, both commands are the same. They turn the turtle's head by 360 degrees.

- iv. How many degrees does a circular path consist of?**

Ans. A circular path consists of a total of 360 degrees.

- v. Which commands perform the same functions as 'tr' or 'tl'?**

Ans. The direction command performs the same functions as 'tr' or 'tl'.

- vi. What are the similarities and differences between clear and reset commands?**

Ans.

Similarities	Differences
The clear command cleans the drawing on the canvas.	The clear commands enables the angle and position of the turtle.
The reset command also cleans the drawing on the canvas.	The reset command resets everything to its original form.

**2. Fill in the blanks.**

- i. The turn left command turns the turtle's head to the left.
- ii. The reset command clears the canvas.
- iii. The direction command counts the number of degrees from zero.
- iv. The pen width commands sets the thickness of the pen used for drawing on the canvas.
- v. The canvas size commands sets the size of the canvas.

**3. True/false.**

- i. The backward command can be used to move the turtle forward
- ii. There is no short form of the reset command
- iii. You cannot change the thickness of a pen
- iv. The RGB combination is three numbers in the range 0 to 100
- v. The short form of the clear command is cl

T
T
F
F
F

**4. Choose the correct answer.**

<b>1. This command moves the turtle forward by 80 steps.</b>			
a) fw 80	b) bw -80	c) tr 80	<b>d) both a and b</b>
<b>2. This command turns the turtle by 90 degrees to the left.</b>			
a) tr 90	<b>b) tl 90</b>	c) dir 90	d) tw 90
<b>3. The commands that takes no input.</b>			
a) dir	b) clear	c) reset	<b>d) both b and c</b>
<b>4. The command to change the turtle's pen color to yellow.</b>			
a) pencolor 255, 255, 255	<b>b) pencolor 255, 255, 0</b>	c) pencolor 255, 0, 255	d) pencolor 0, 255, 255
<b>5. The command to change the canvas to 300 steps height and 300 steps width.</b>			
a) canvassize 100, 300	<b>b) canvassize 300, 300</b>	c) canvassize 300, 100	d) canvassize 100, 100


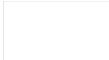



**5. Jumbled words.**

Jumbled Words	Arranged Words
ROTIDE	EDITOR
CNASAV	CANVAS
RABLOOT	TOOLBAR
EPSED	SPEED
ELTURT	TURTLE

**6. Drag and Drop**

Here are RGB values for some common colours. Identify the colours for RGB combination.

Black, White, Pink, Yellow, Dark Red

RGB Combination	Colour
0,0,0	Black 
255,255,255	White 
255,0,255	Pink 
255,255,0	Yellow 
150,0,0	Dark Red 

**7. Word Search.**

Paste	Command	Forward	Pen width	Editor					
P	E	N	W	I	D	T	H	Y	K
S	F	N	Y	R	E	F	B	J	N
Z	A	E	D	I	T	O	R	R	F
C	S	F	H	Q	D	R	P	E	D
P	A	S	T	E	F	W	O	F	J
B	F	C	O	M	M	A	N	D	B
N	K	V	D	W	H	R	T	H	R
M	J	C	A	R	K	D	S	M	J

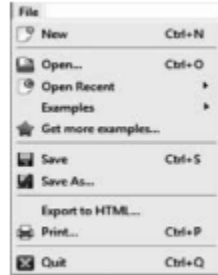
**8. Write the commands for the following tasks.**

Tasks	Commands
Turn the turtle 80 degrees to the left.	turn left 80
Move the turtle 90 steps backward.	backward 90
Bring the turtle to the center position in the same state when you started KTurtle.	reset
Move the turtle 60 steps forward.	forward 60
Change the canvas colour to red.	canvas color 255,0,0

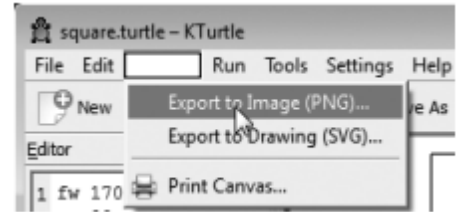
## 9. Label the parts marked in the figure.



KTurtle icon



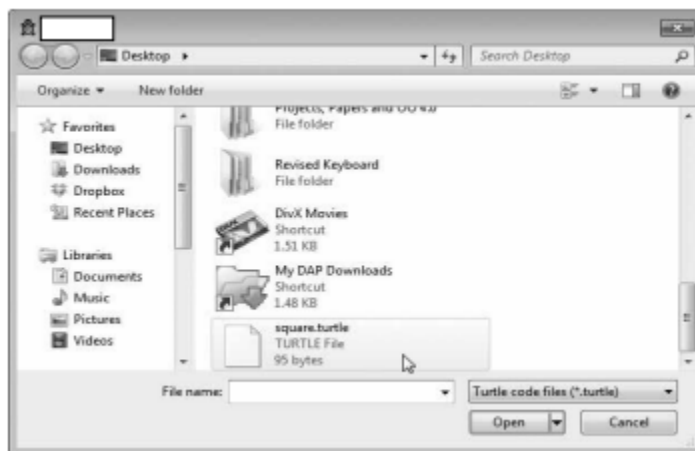
File menu on the menu bar



Canvas menu



Toolbar



Open dialog box

10. Match the columns.

