

1. Answer the following questions.

i. Name the four basic parts of a plant cell.

Cell wall	Cell membrane	Cytoplasm	Nucleus
-----------	---------------	-----------	---------

ii. Which part of plant cell controls its activities?

Ans: Nucleus

iii. What is the function of cell wall?

Ans: It gives shape to a plant cell.

iv. Are plant cells flexible?

Ans: No, plant cells are rigid.

v. Which organelle of a plant cell performs photosynthesis?

Ans: Chloroplast performs photosynthesis.

vi. Name the power house of a plant cell?

Ans: Mitochondria.

vii. Do plant cells have centrioles?

Ans: No, centrioles are only present in animal cells.

viii. Name the network of channels in plant cell?

Ans: Endoplasmic reticulum.

ix. Name five organelles of a plant cell.

Chloroplast	Mitochondria	Endoplasmic reticulum	Vacuole	Nucleus
-------------	--------------	-----------------------	---------	---------

x. How many vacuoles do plant cells have?

Ans: A single large vacuole.

2. Tick the right option.

1. All plants are made up of:

- I. Bricks II. Atoms **III. Cells** IV. None of these

2. Which organelle produce energy in plant cell?

- I. **Mitochondria** II. Nucleus III. Ribosomes IV. Lysosomes

3. Ribosomes produce _____ in the cell.

- I. Fats **II. Protein** III. Nitrogen IV. Oxygen

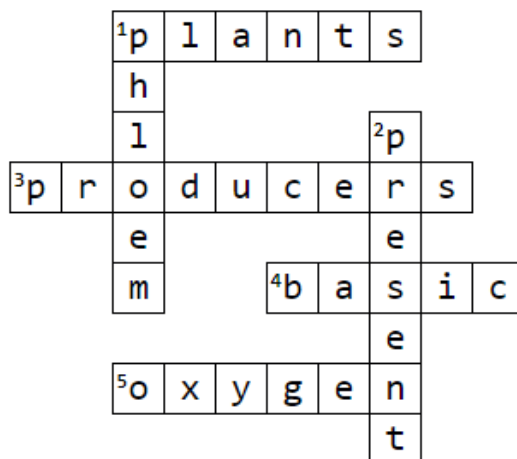
4. Stomata are involved in:

- I. Photosynthesis II. Respiration **III. Gaseous exchange** IV. Transport of water

5. _____ cells help in transport of water.

- I. Xylem** II. Phloem III. Mesophyll cells IV. Root hair cells

3. Crosswords



Across

1. Photosynthesis occurs in:
3. Plants are also called as:
4. Cells are _____ units of plants.
5. _____ is produced by plants.

Down

1. They transport food.
2. Cell wall is _____ in plant cells.

4. Words Search

Find the following word in the words search.

Mitochondria	Xylem	Chloroplast	Nucleus	Cytoplasm
--------------	-------	-------------	---------	-----------

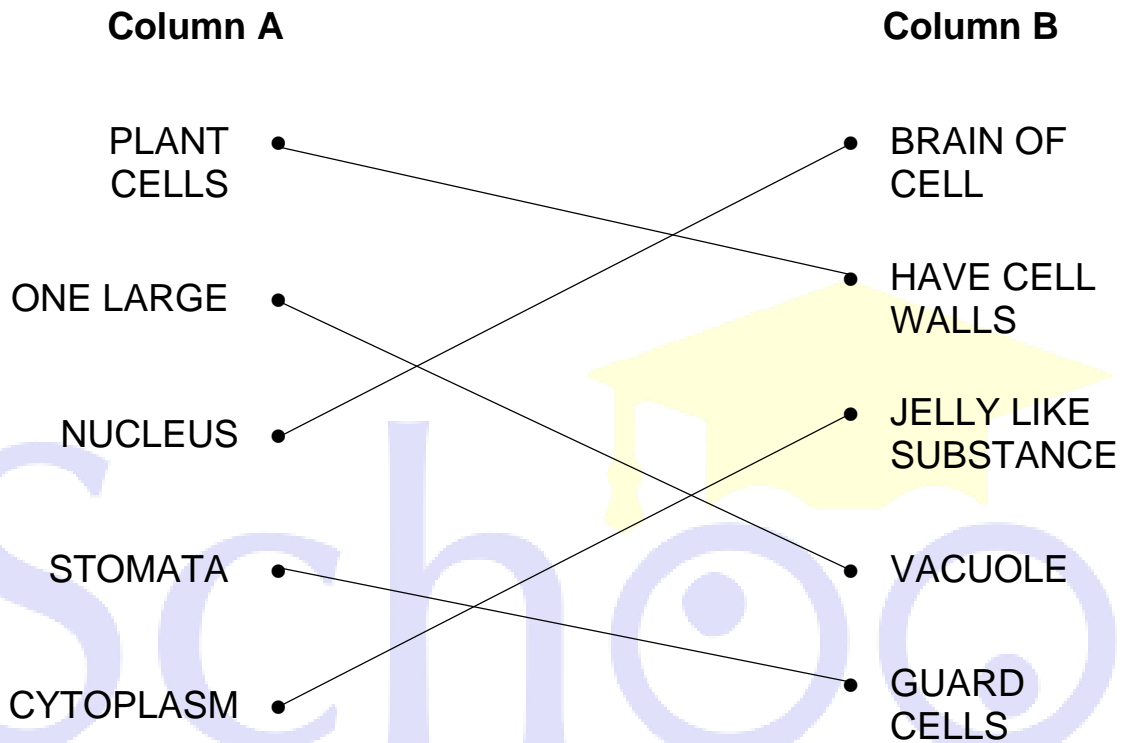
O	C	Y	T	P	L	A	S	M	Q	I	D	C
Y	U	N	V	G	D	J	J	X	J	U	B	T
D	M	I	T	O	C	H	O	N	D	R	I	A
L	Y	M	H	O	P	I	S	M	X	H	M	S
C	H	L	O	R	O	P	L	A	S	T	K	X
J	W	X	A	N	T	U	B	O	F	U	E	Y
G	O	Y	P	D	J	C	D	R	H	I	U	L
W	P	N	R	X	C	C	S	H	I	M	H	E
J	V	G	N	U	C	L	E	U	S	P	F	M

5. Jumbled Words

- | | |
|-----------------------------------|--------------------------------------|
| i. TOMASTA <u>STOMATA</u> | ii. MELYX <u>XYLEM</u> |
| iii. EMOLPH <u>PHLOEM</u> | iv. STISEUS <u>TISSUES</u> |
| v. LYLHSPEOM <u>MESOPHYLL</u> | vi. FEAL <u>LEAF</u> |
| vii. SOLERTINEC <u>CENTRIOLES</u> | viii. SO
MALPTYC <u>CYTOPLASM</u> |
| ix. LOCUAEV <u>VACUOLE</u> | x. SUELCUN <u>NUCLEUS</u> |

6. Columns

Match the column A with column B.



7. Fill in the blanks using the given words.

different	nucleus	Plants	vacuoles	water
-----------	---------	--------	----------	-------

- i. **Plants** are living things made up of cells.
- ii. Root hair cells help in absorption of **water** from soil.
- iii. Plant and animal cells are **different**.
- iv. DNA is present in the **nucleus** of cell.
- v. **Vacuoles** store waste materials.

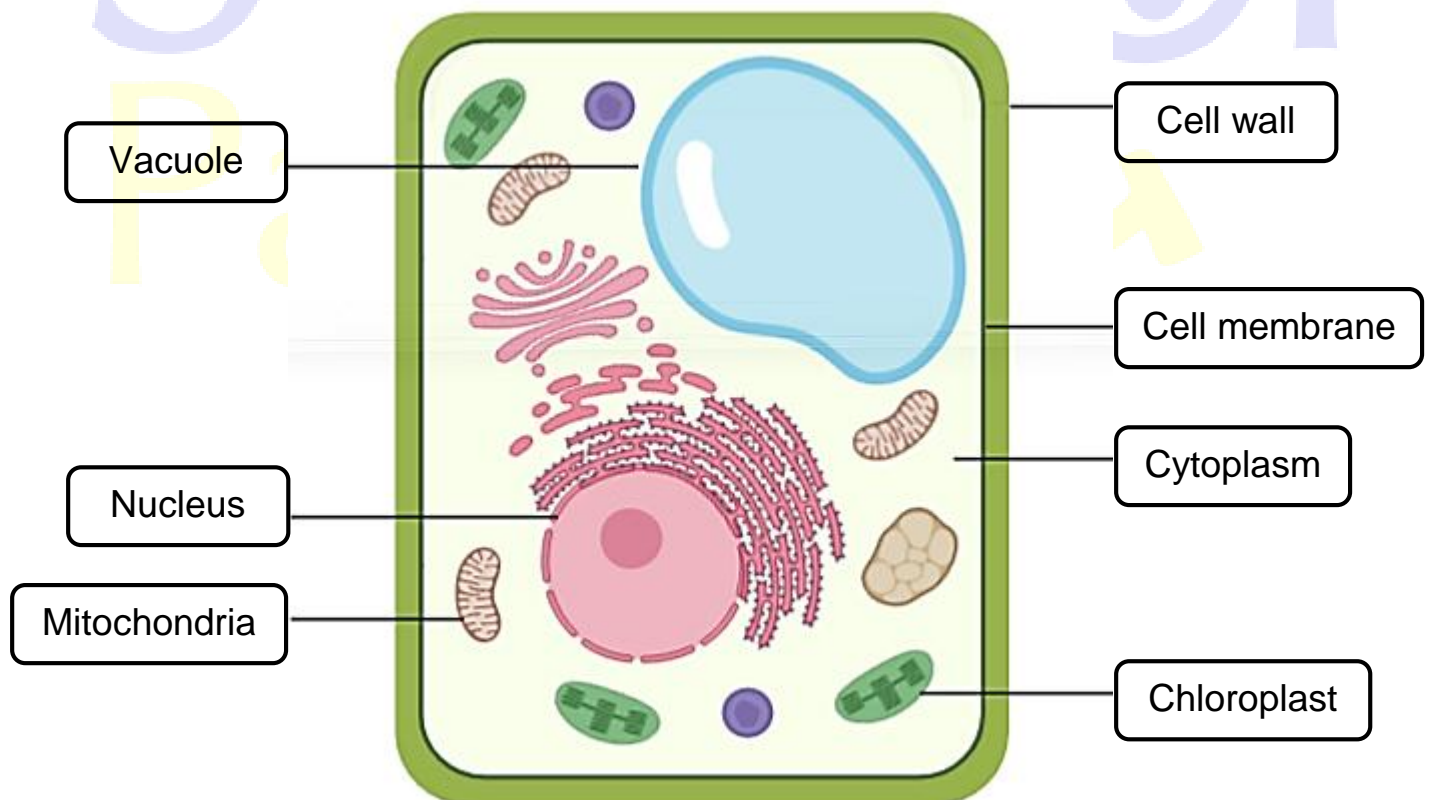
8. Write “T” for the true and “F” for the false statement.

- i. Cells combine to form tissues.
- ii. Plants exchange gases through root hair cells.
- iii. Plant cells are specialized for their job.
- iv. Cell contains organelles.
- v. Energy is produced in chloroplast of cells.

T
F
T
T
F



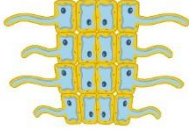
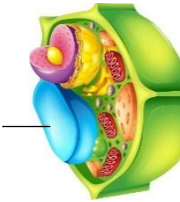

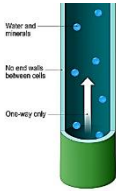


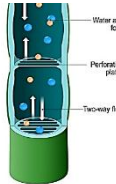
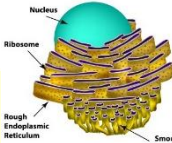
9. Label the diagram.

A Plant Cell



10. Drag and Drop

Look at the pictures and write their names in the relevant column.

				
Palisade	Chloroplast	Root hair cells	Vacuole	Stomata
				
Xylem	Mitochondria	Nucleus	Phloem	Endoplasmic reticulum

Specialized cells

Palisade

Root hair cells

Stomata

Xylem

Phloem

Organelles

Chloroplast

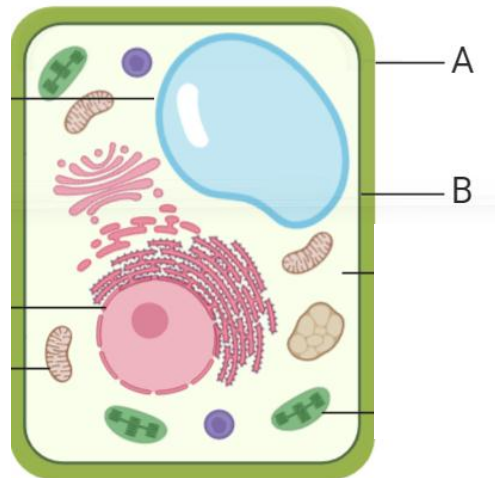
Vacuole

Stomata

Mitochondria

Endoplasmic reticulum

11. Comprehension



'A' is a unique feature structure seen in plant cells. While the 'B' acts as the outer layer in an animal cell. 'A' is an extra layer mainly made up of cellulose.

i. Name the structure A also give its function.

Ans: Structure A is cell wall. It gives a plant cell its shape.

ii. Name the structure B also give its function.

Ans: Structure B is cell membrane. It controls what substances can enter and leave the cell.

iii. What is composition of 'A'?

Ans: 'A' is composed of cellulose.